



A marble bed installation by artist Krishna Kador is suspended over a bengalota victorian marble table-top table, with a custom-made brass net and border. A Sierler Splendour chair rests against champagne marble partition walls. At an informal lounge area, the space leads you, most unexpectedly, into the master bedroom.

Rock Solid

There are many ways of looking at a project like this. My favourite is up close, with a slab by polished slab account of the grit and the glamour that went into creating the final cut. Here's my impression of the magnum opus called, The Quarry CoLab.

TEXT BY SONALIA ITALIA SHANKU
PHOTOGRAPHY BY SHANTONU AGARWAL
PRODUCTION BY ANUBHAV PATIL/ANU KUNDA
DESIGN BY DIBBY ANJALA



From the brick chai stall at the end of the dusty road to the glowing white expanse of a marble showroom, outward and onward to a noisy garage and finally, inward to a decrepit shed-like structure. I thought I was being lead to a top-secret location by Rupesh Shinde, Founder and Chief Curator of The Quarry, where he kept his proud collection of the most precious marble slabs in the world.

Nothing could've prepared me for the hush of the space I walked into. Nothing! Not even the discrete almost-liveried security staff hovering outside. The first thing that got me was the unexpected contrast. From harsh glare to deep shadow, dusty gravel to statement concrete; afternoon sunlight to distinguished floor fittings; nude mechanical clomouring to discreet Bang and Olufsen-betted music.... Suddenly, as my senses galvanised into delighted sensorial activity, I feel the need to stop and stare. Forgive my theatrics, but that's what my first reaction to The Quarry GoLab was!

"Like a fully habitable home with over 130 types of the world's finest marbles, used in ways you can never imagine," came Rupesh's explanation for this cave of visually-stunning luxury that he'd walked me into. "This is a collaboration like no other – Mother Nature's finest stones, India's finest young architect, the world's best brands, highly-skilled local craftsmen...."

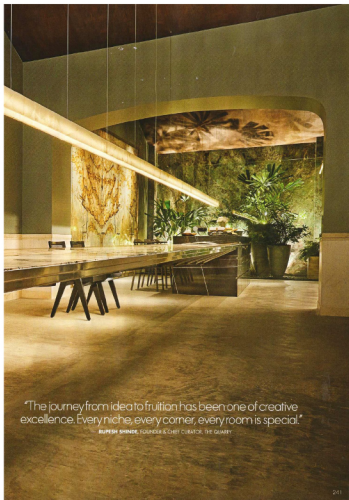
Scarlet Splendour Terra Alta with custom-designed Orbance marble top and Inella coffee tables flank a Baxter Tejero sofa. A Bang & Olufsen Beolab 18 speaker is nestled in the far corner. Landscape design and light-weight cement textured pans by Karel Mosler and Associates add foliage to the space



The coffee table is a three-ton single-piece marble block that needed two forklifts to place it inside! Custom-built Carrera marble sofas and a featured cement marble bar make every point of "marble" interest. A hand-painted floor sculpture from long white cement adds to the living space

HOME MUMBAI

A 30-foot-long Onyx Stone pendant light, custom made for this space, is suspended over a 30-foot-long continuous dining table, which features a grey mist marble surface. Abhinav Choudhary, chair made by Maheshwar Doshi and a Sialkali Plus marble frame from Chennai House complete the set. P2 is a among the most deer marbles in the world, and also one of Repetto's favourites.



"The journey from idea to fruition has been one of creative excellence. Every niche, every corner, every room is special."

RUPESH SHINDE, FOUNDER & CHIEF CURATOR, THE QUARRY



"They say, when you wish for something with all your heart, the Universe conspires to make it happen. What a conspiracy this has been!"

— RUPESH SHINDE, FOUNDER & CHIEF CURATOR, THE QUARRY

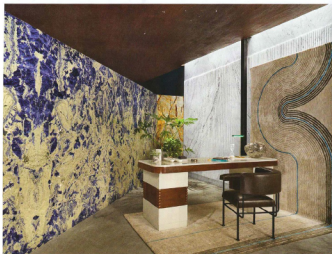
CLOCKWISE FROM TOP LEFT: The kitchen has a custom-built Sarsen marble kitchen island with a custom-built Sarsen marble kitchen island with a custom-built Sarsen marble kitchen island. A Scarlat Splendour Women in Persia vanity table, Flax Betty Angell's floor lamp and Yellow Afterglow chair in the vanity area. A Scarlat Splendour Qinas lounge chair, Ray Cosmos marble table and hand-made Sarsen marble engraved pedestal.



I like to think of this as the family room, with its Scarlat Splendour Coromandel sofa and coffee table. Mahendra Doshi's new chandelier and a grey oval marble seat with custom Splendour carpet border are featured as well. A Flax Betty Angell's floor lamp and Bionno Thomas marble bookshelves lend the space character. Custom artwork made from recycled marble sits on the floor from Chennai. A suspended glass coffee table and lampshade complete the setup.



HOME MUMBAI



I had to agree with Rupesh. Interestingly, when he first got in touch with architect Byram Wadia for the project, the idea was to put together a design gallery with marble as the focal point. The space needed to be worthy of the rare material it was going to showcase. The story of the evolution and final, birth of Co-Lab is almost as exciting as the space itself — I think I'll stick to talking about just that for now. One of the most remarkable facets of this home-like studio is that marble — which is the central protagonist here — enjoys the most unexpected applications. The layout is planned with an element of surprise. There isn't a single boring corner — from the bathroom in a closet to the cantilevered table, walkthrough kitchen, tucked-away veranda, plush white teeny room and finally, the private living areas.

As much as we tend to take the material for granted on our floors, it's just as tricky and delicate to deal with in nonconformist design and placement. Book-matching the natural veins of the stone to give it certain visual edge, for instance, and the sheer weight of the raw material, were just a couple of the challenges that Byram and his team had to work around.

Without getting into too much descriptive prose, I'll let you enjoy the space and its material delight, quite literally, through the photo spread here. However, you may not get to feel the coolly elegant vibe that envelopes you when you're there. For now, it's mine to enjoy and yours to imagine! ♦

A vintage Maheshwari Doshi desk with Oriza Branca rug, Stellar Works Cotton Club lounge chair and a carpet by Splendour adorn the home office.

Backed into Chapeira and Black Marquise custom-built marble clad, Oriza Branca windows and another carpet by Splendour enjoy pride of place, and the marble wall installation by artist Krishna Reddy continues into the bedroom.

